

# Analysis of Column 14AA on the Second Floor

Wayne Coste, PE

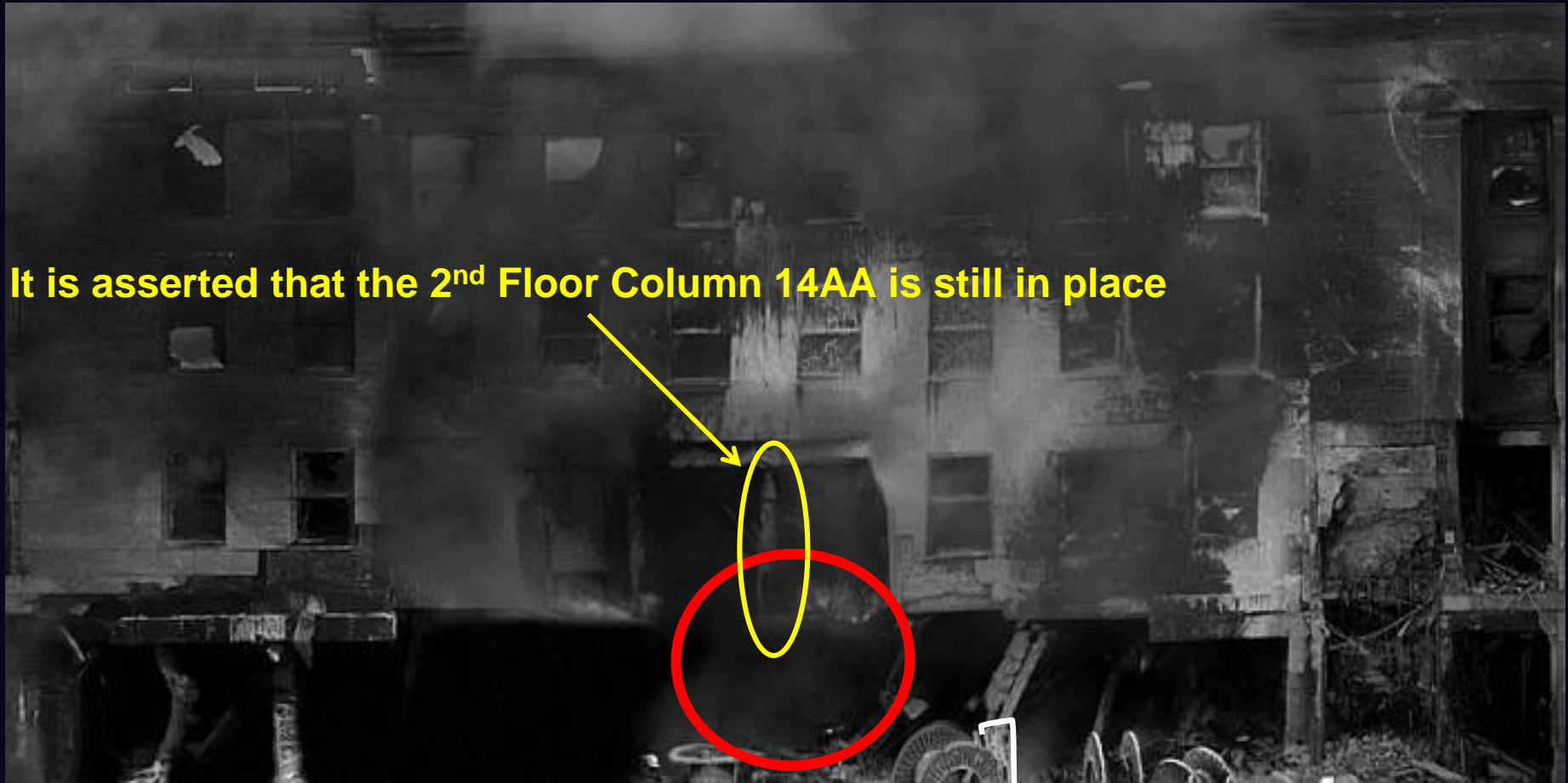
Member, [ScientistsFor911Truth.org](http://ScientistsFor911Truth.org)

Analysis of Column 14AA  
on Second Floor

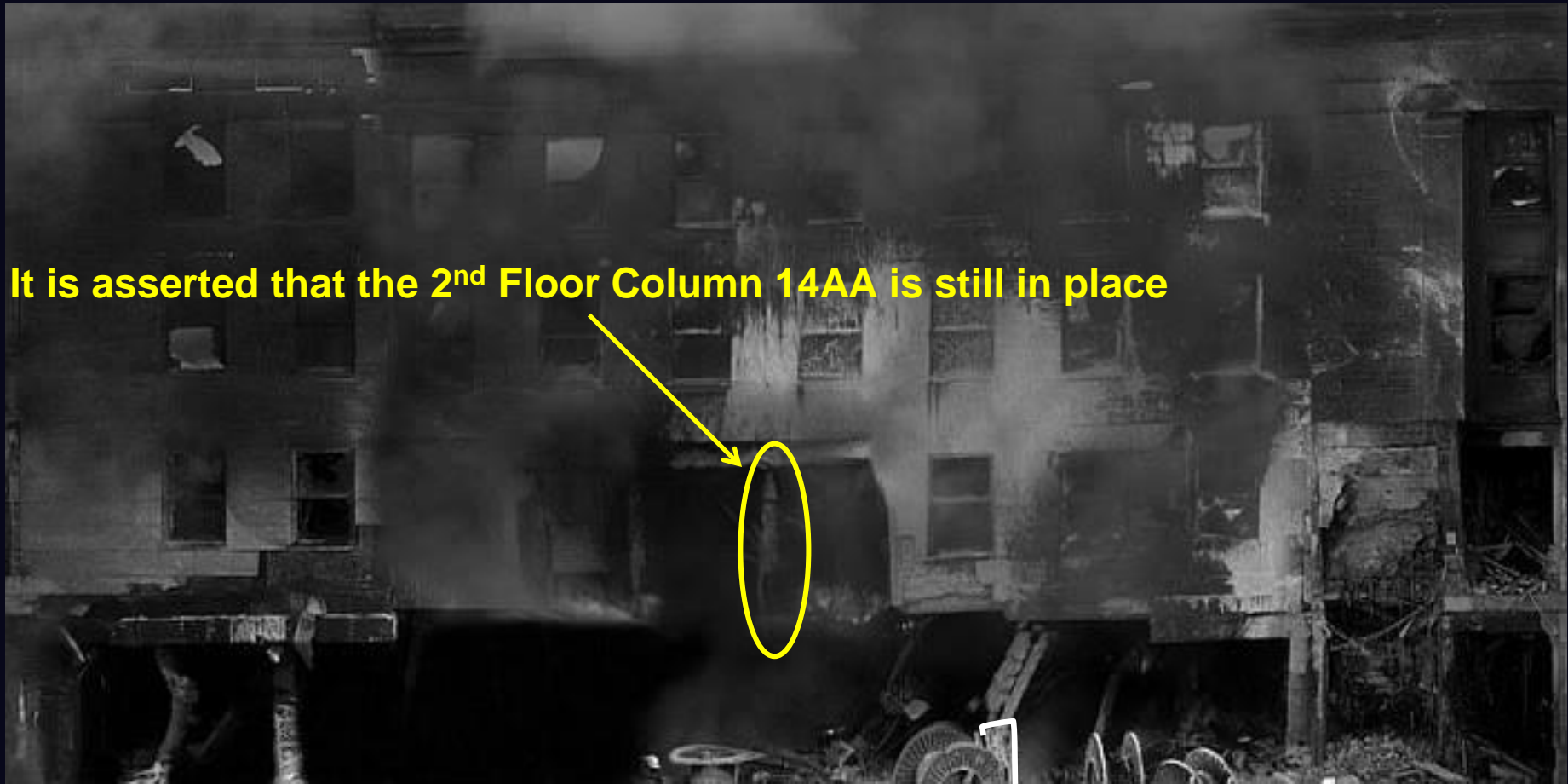
# Column 14AA / Second Floor

- Damage to column 14AA on the second floor (14AA<sub>2</sub>) has become a central area of dispute among 9/11 Pentagon researchers
  - Is Column 14AA<sub>2</sub> standing, undamaged, at the exact location of the (alleged) impact – if so:
    - Does this disprove the large plane impact hypothesis?
    - Can this be consistent with a large plane impact?
  - Does Column 14AA<sub>2</sub> on the second floor show significant impact damage?

# West Façade Showing Impact Area

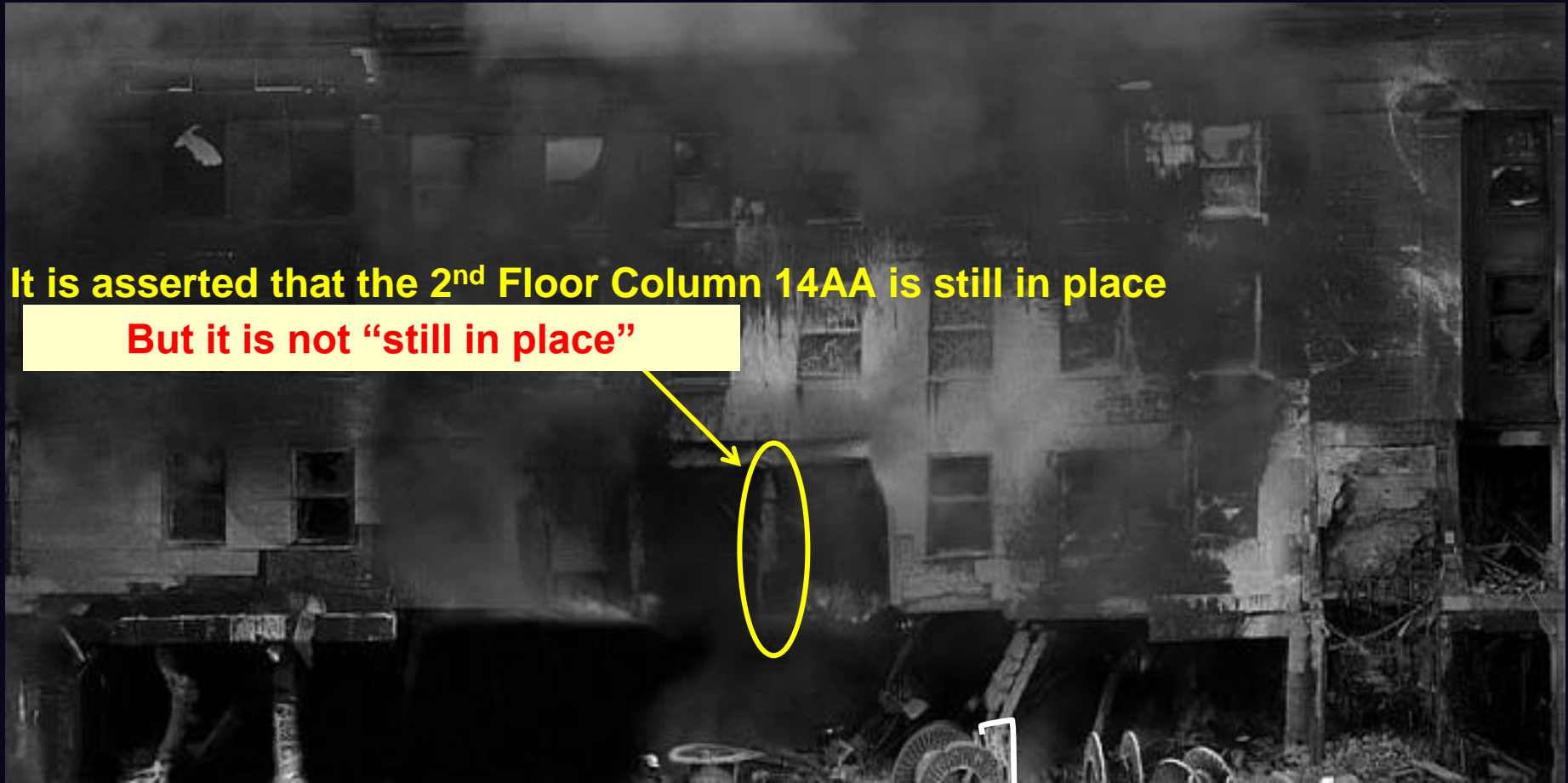


# West Façade Showing Impact Area

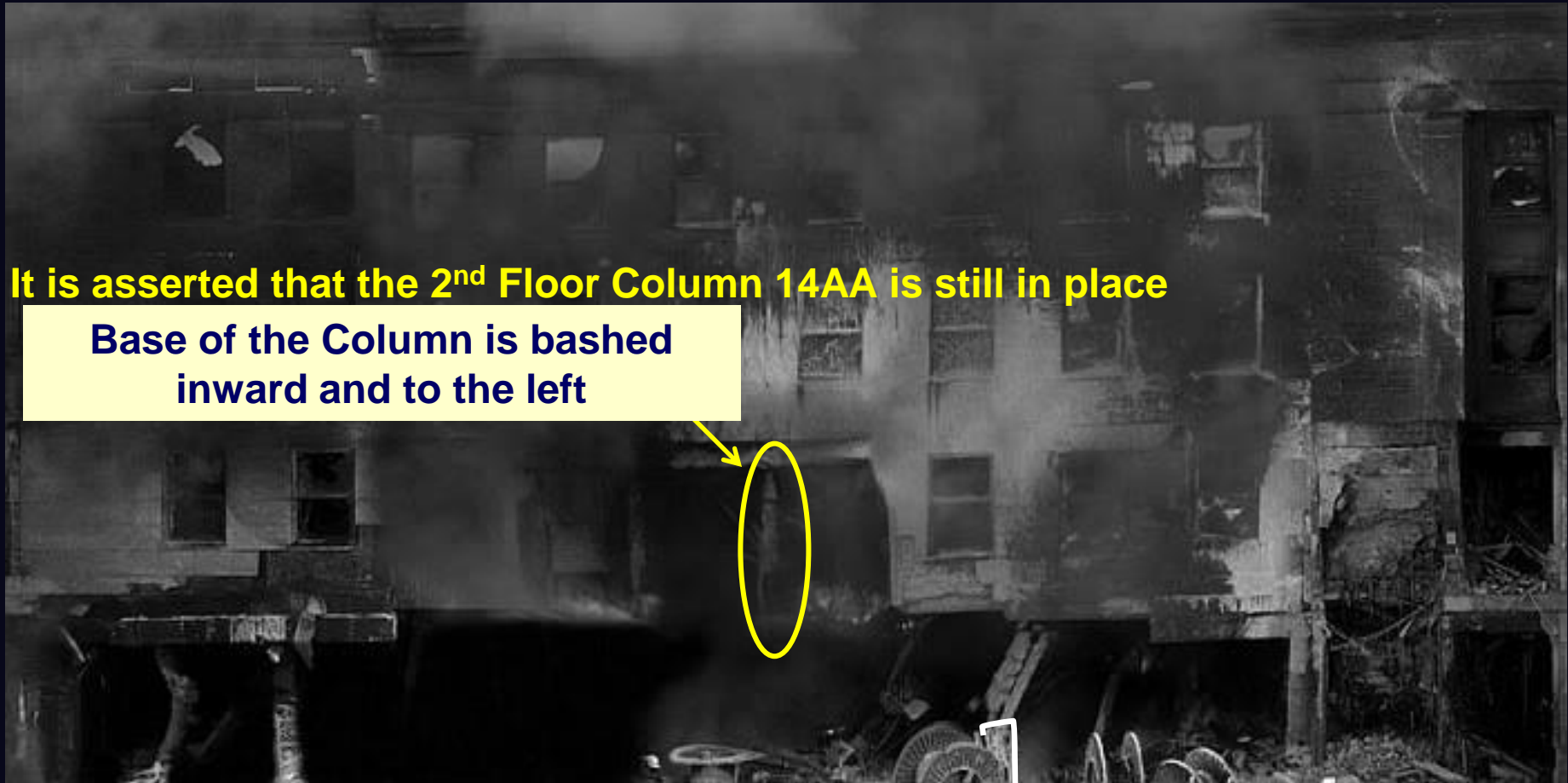


It is asserted that the 2<sup>nd</sup> Floor Column 14AA is still in place

# West Façade Showing Impact Area

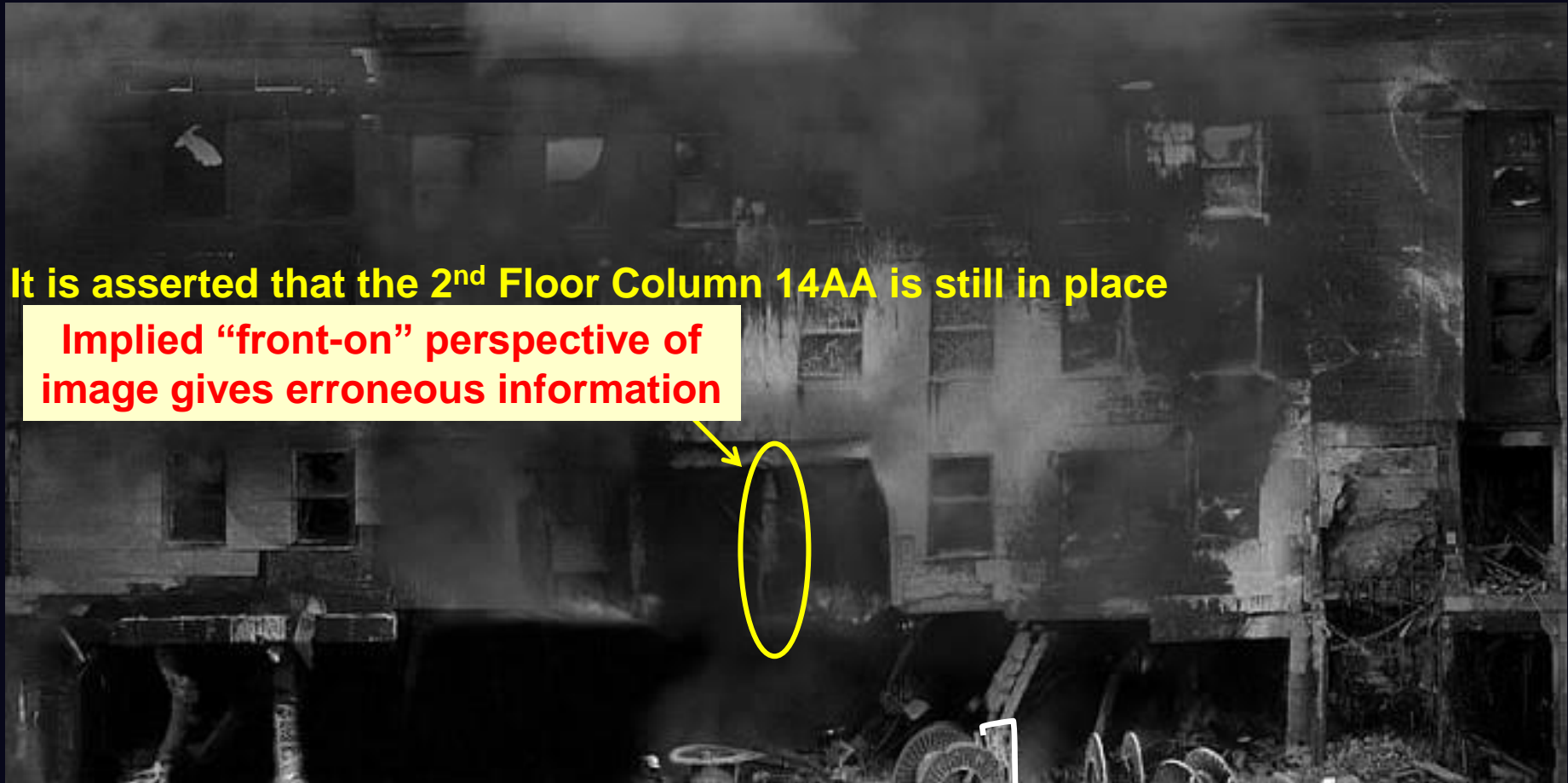


# West Façade Showing Impact Area

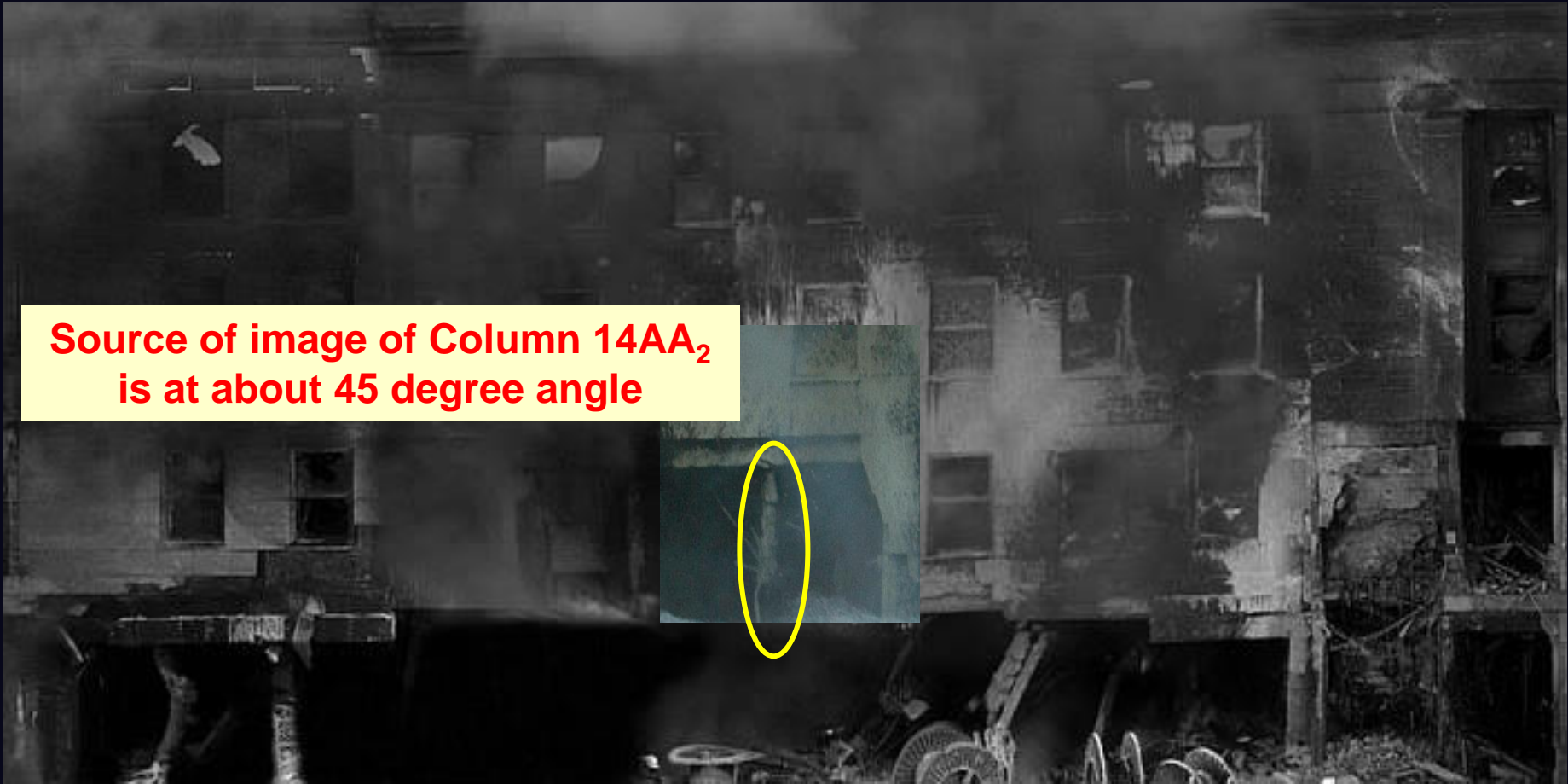




# West Façade Showing Impact Area



# West Façade Showing Impact Area





# Expanded Photo of Column 14AA<sub>2</sub>

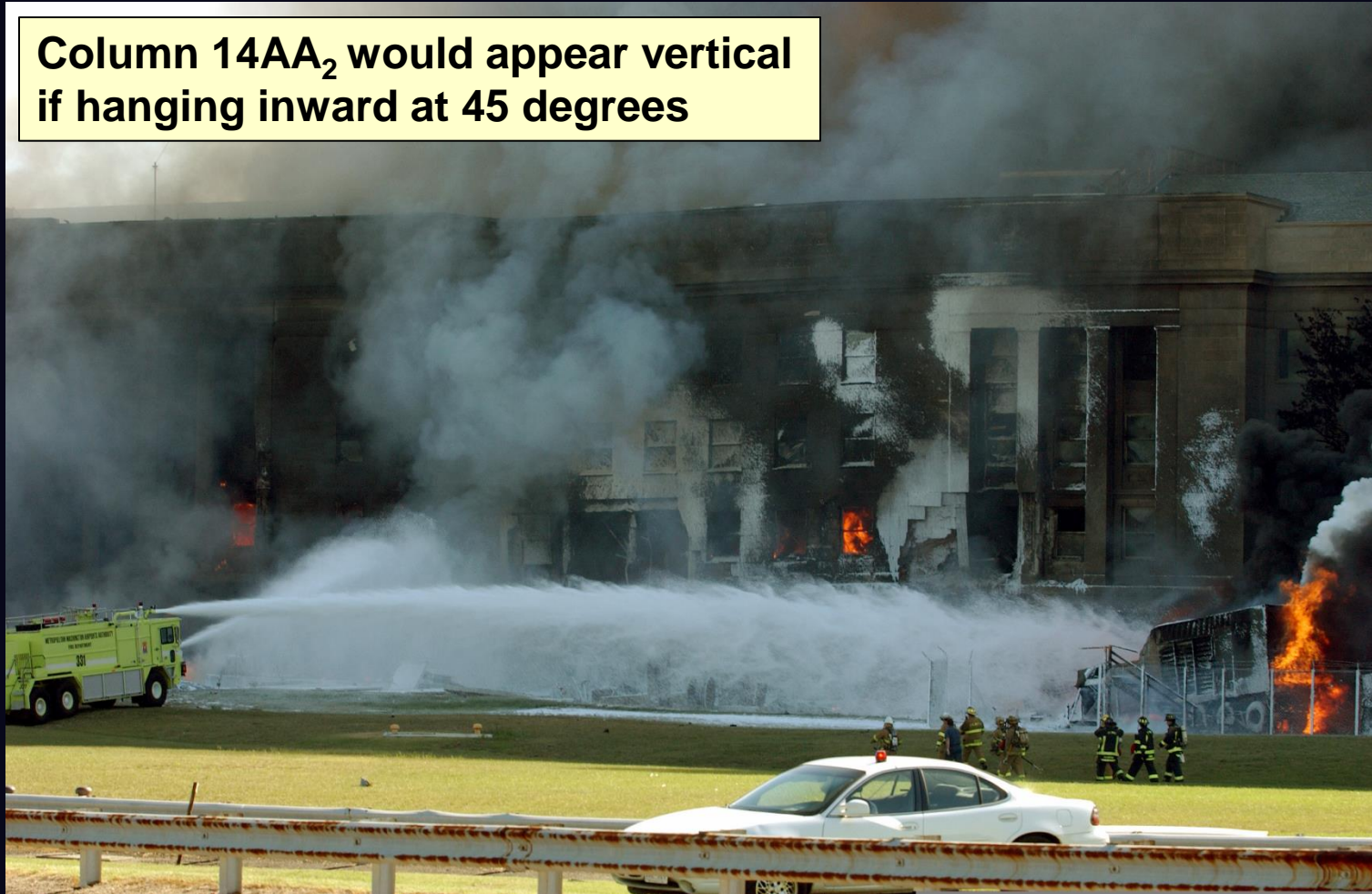


Member, [ScientistsFor911Truth.org](http://ScientistsFor911Truth.org)

Analysis of Column 14AA  
on Second Floor

# Source of Photo of Column 14AA<sub>2</sub>

Column 14AA<sub>2</sub> would appear vertical if hanging inward at 45 degrees



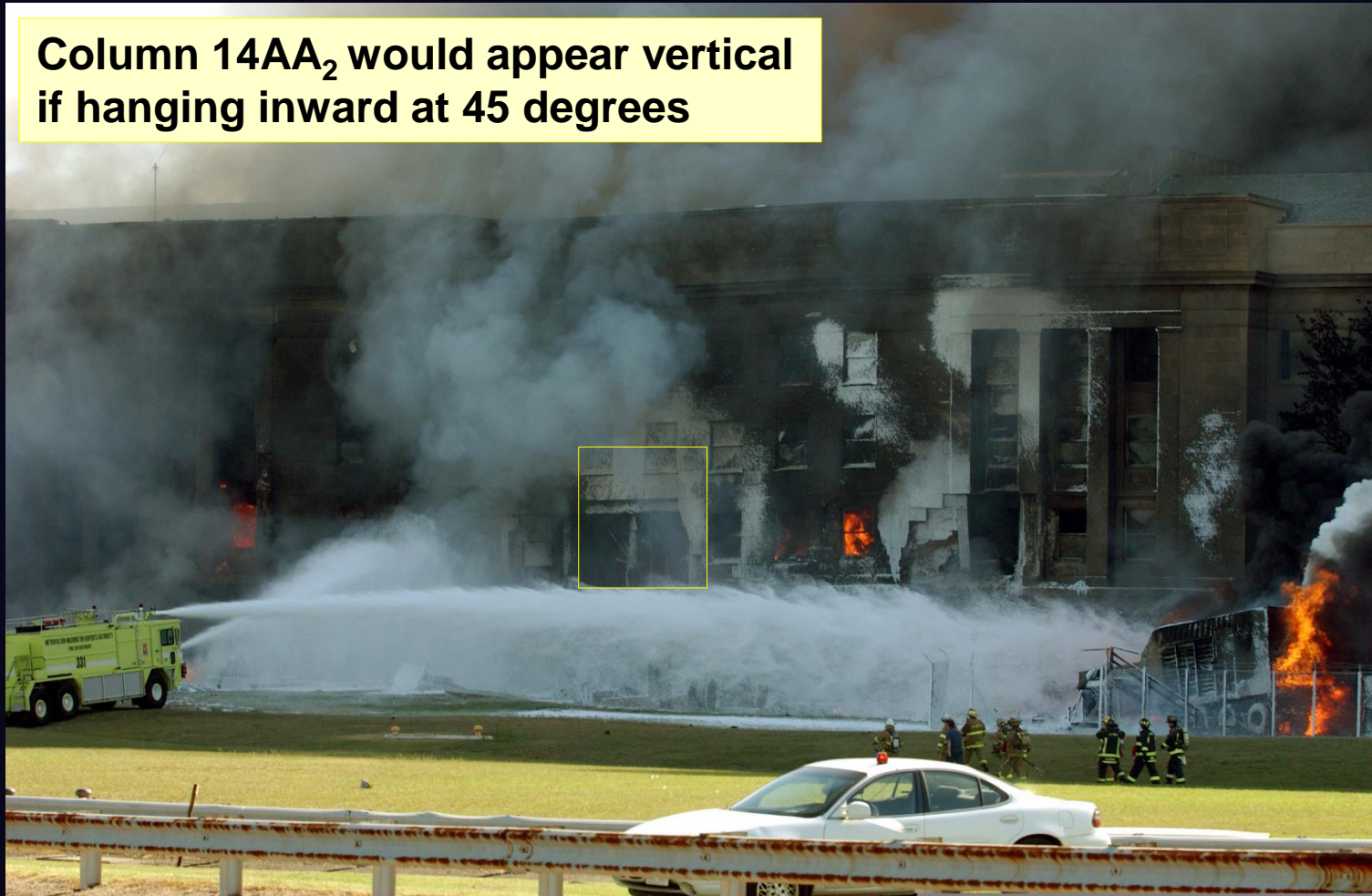
Member, [ScientistsFor911Truth.org](http://ScientistsFor911Truth.org)

Analysis of Column 14AA  
on Second Floor



# Source of Photo of Column 14AA<sub>2</sub>

Column 14AA<sub>2</sub> would appear vertical if hanging inward at 45 degrees



Member, [ScientistsFor911Truth.org](http://ScientistsFor911Truth.org)

Analysis of Column 14AA  
on Second Floor

# Another Photo from the South at About 45 degrees



Member, [ScientistsFor911Truth.org](http://ScientistsFor911Truth.org)

Analysis of Column 14AA  
on Second Floor



# Original Will Morris Photo



Member, [ScientistsFor911Truth.org](http://ScientistsFor911Truth.org)

Analysis of Column 14AA  
on Second Floor



# Original Will Morris Photo



If Column 14 is located along the front façade, it should be visible in the foreground like the rest of the building facade

Member, [ScientistsFor911Truth.org](http://ScientistsFor911Truth.org)

Analysis of Column 14AA  
on Second Floor



# Column 14AA<sub>2</sub> Will Morris Photo – From North



**As photographed**

Member, [ScientistsFor911Truth.org](http://ScientistsFor911Truth.org)

Analysis of Column 14AA  
on Second Floor

# Column 14AA<sub>2</sub> Will Morris Photo – From North



**As photographed and highlighted**

Member, [ScientistsFor911Truth.org](http://ScientistsFor911Truth.org)

Analysis of Column 14AA  
on Second Floor

# Column 14AA<sub>2</sub> Will Morris Photo – From North



**With brightness and contrast adjustments**

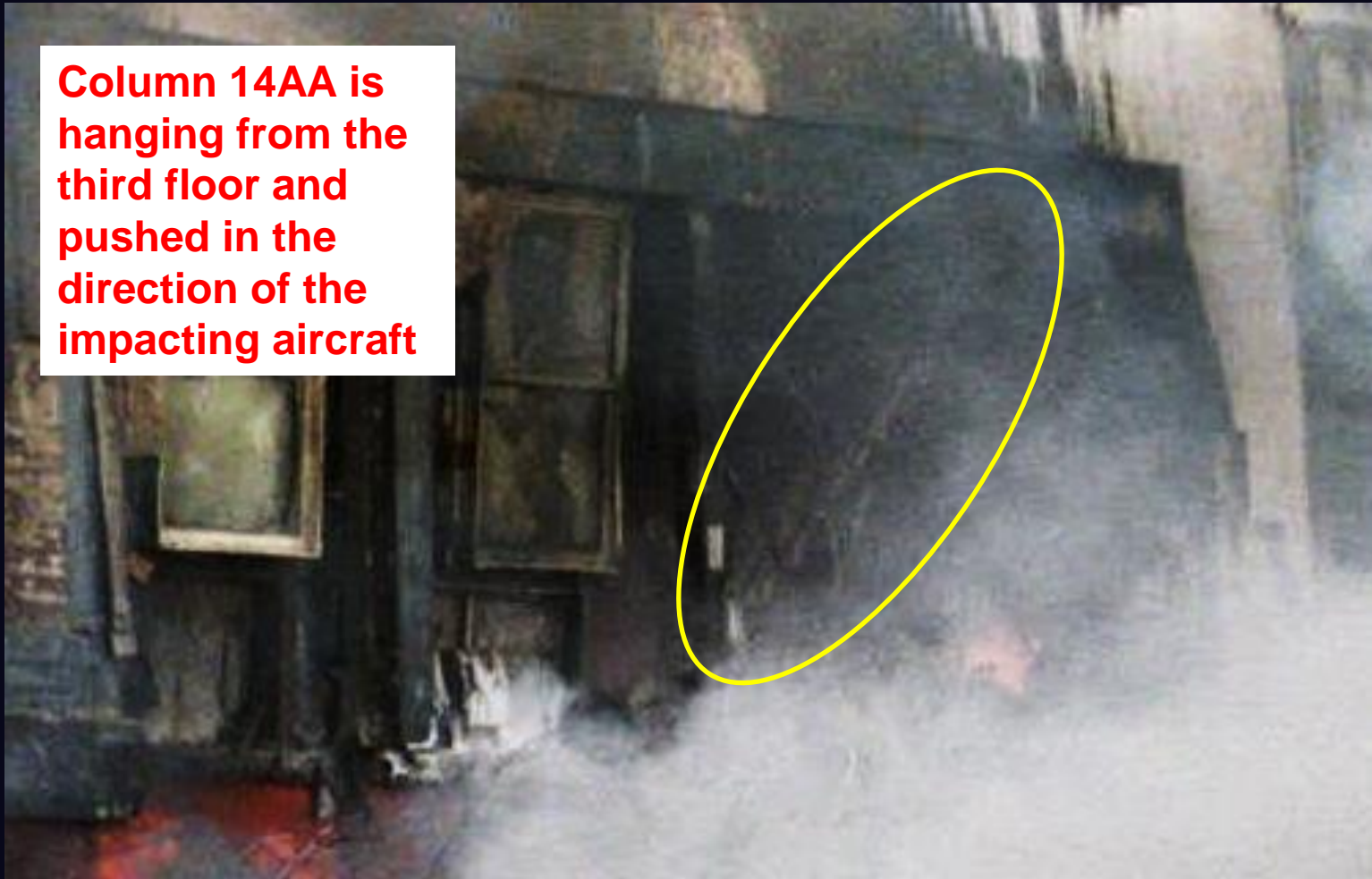
Member, [ScientistsFor911Truth.org](http://ScientistsFor911Truth.org)

Analysis of Column 14AA  
on Second Floor

# Column 14AA<sub>2</sub>

## Will Morris Photo – From North

**Column 14AA is hanging from the third floor and pushed in the direction of the impacting aircraft**



**With brightness and contrast adjustments**

Member, [ScientistsFor911Truth.org](http://ScientistsFor911Truth.org)

Analysis of Column 14AA  
on Second Floor



# Column 14AA<sub>2</sub> From CBS 9 Video – From North

Column 14AA from CBS 9 Video – From North  
<https://archive.org/details/cbs200109110954-1036#>



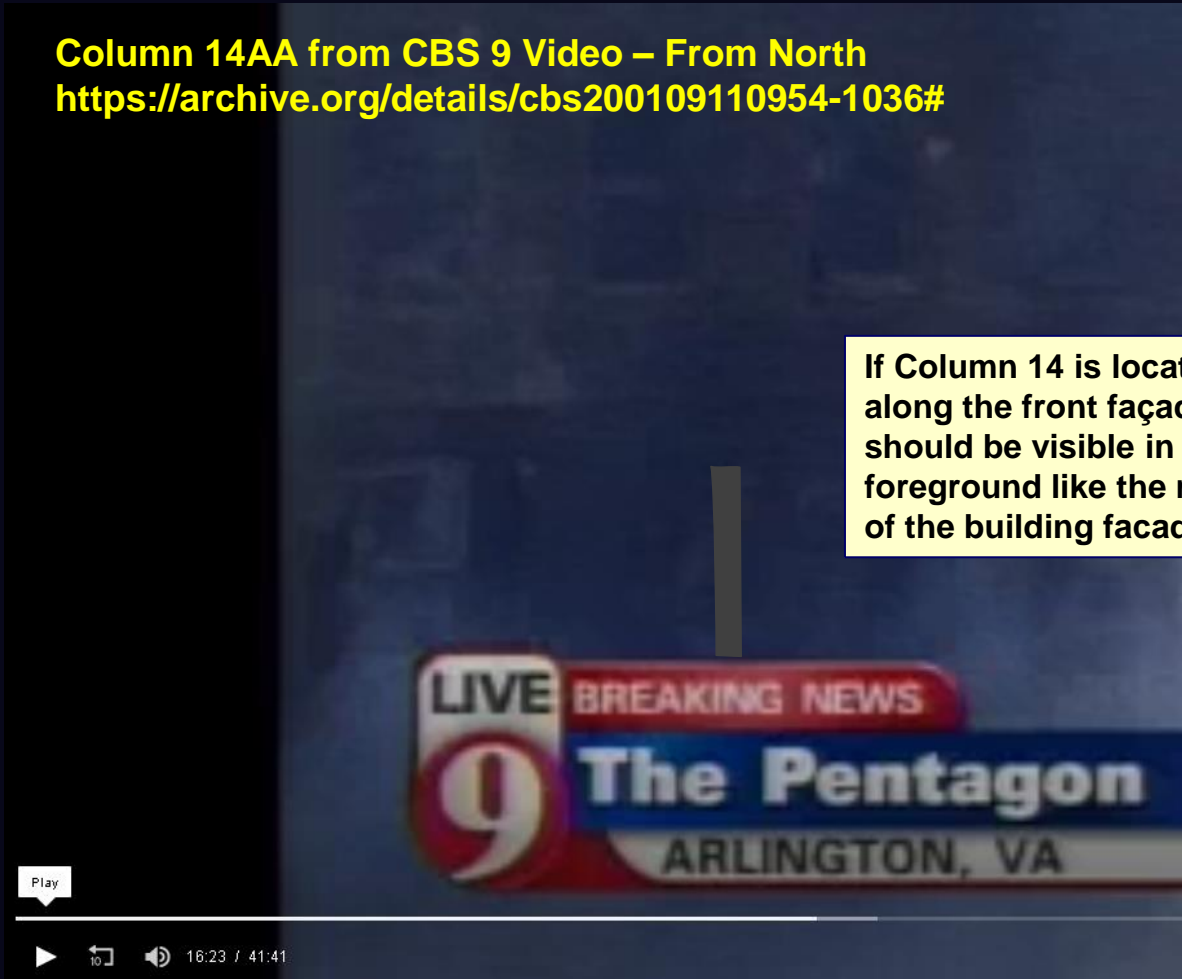
Member, [ScientistsFor911Truth.org](http://ScientistsFor911Truth.org)

Analysis of Column 14AA  
on Second Floor

# Column 14AA<sub>2</sub> From CBS 9 Video – From North

Column 14AA from CBS 9 Video – From North  
<https://archive.org/details/cbs200109110954-1036#>

If Column 14 is located along the front façade, it should be visible in the foreground like the rest of the building facade



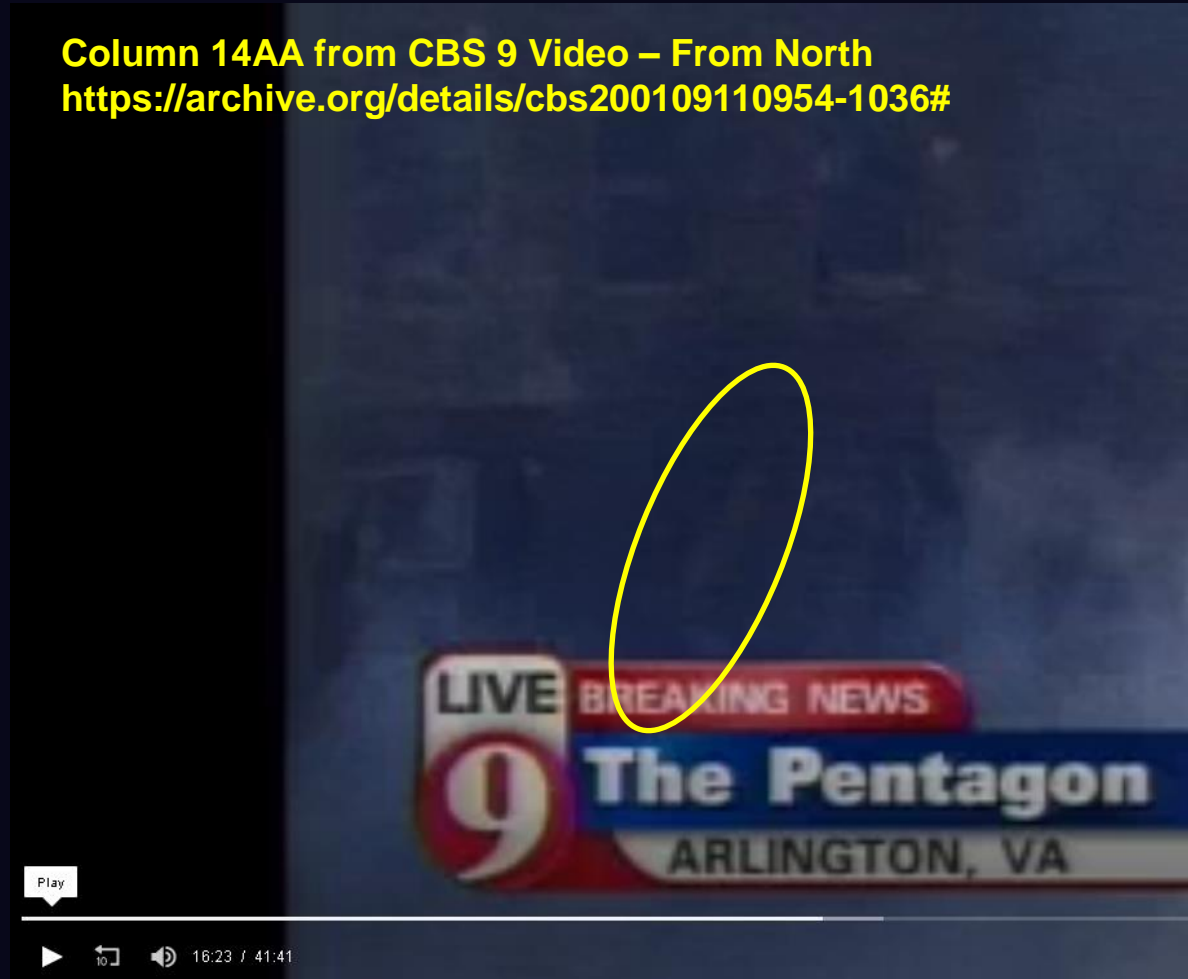
Member, ScientistsFor911Truth.org

Analysis of Column 14AA  
on Second Floor



# Column 14AA<sub>2</sub> From CBS 9 Video – From North

Column 14AA from CBS 9 Video – From North  
<https://archive.org/details/cbs200109110954-1036#>



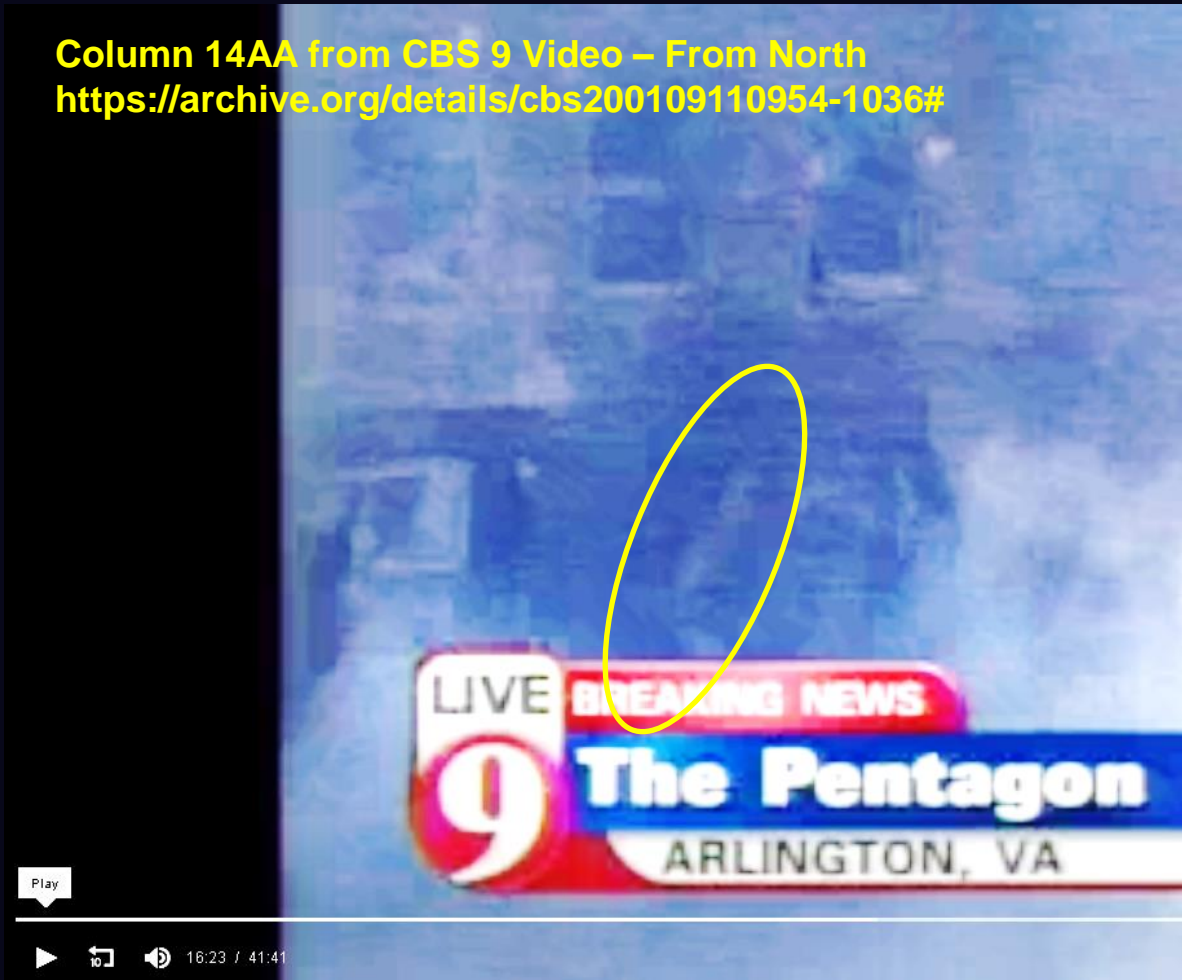
**As recorded and highlighted**

**Member, ScientistsFor911Truth.org**

**Analysis of Column 14AA  
on Second Floor**

# Column 14AA<sub>2</sub> From CBS 9 Video – From North

Column 14AA from CBS 9 Video – From North  
<https://archive.org/details/cbs200109110954-1036#>



**With brightness and contrast adjustments**

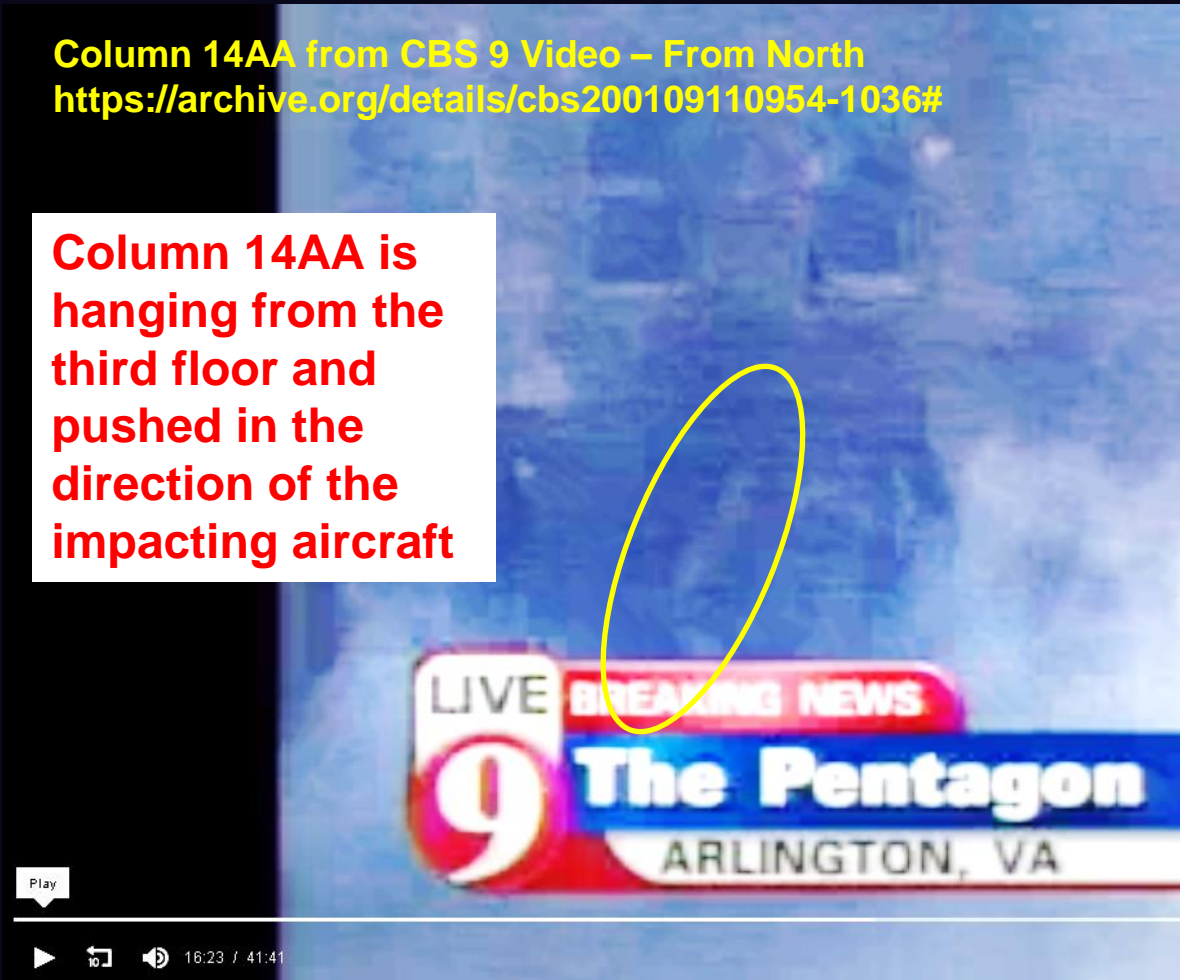
Member, [ScientistsFor911Truth.org](http://ScientistsFor911Truth.org)

Analysis of Column 14AA  
on Second Floor

# Column 14AA<sub>2</sub> From CBS 9 Video – From North

Column 14AA from CBS 9 Video – From North  
<https://archive.org/details/cbs200109110954-1036#>

**Column 14AA is  
hanging from the  
third floor and  
pushed in the  
direction of the  
impacting aircraft**



**With brightness and contrast adjustments**

Member, [ScientistsFor911Truth.org](http://ScientistsFor911Truth.org)

Analysis of Column 14AA  
on Second Floor

# Second Floor Slab Seems Missing in Ingersol Photo #1



Member, [ScientistsFor911Truth.org](http://ScientistsFor911Truth.org)

Analysis of Column 14AA  
on Second Floor

# Second Floor Slab Seems Missing in Ingersol Photo #2



Member, [ScientistsFor911Truth.org](http://ScientistsFor911Truth.org)

Analysis of Column 14AA  
on Second Floor



# Second Floor Slab Seems Missing in Daryl Donley Photo



Member, [ScientistsFor911Truth.org](http://ScientistsFor911Truth.org)

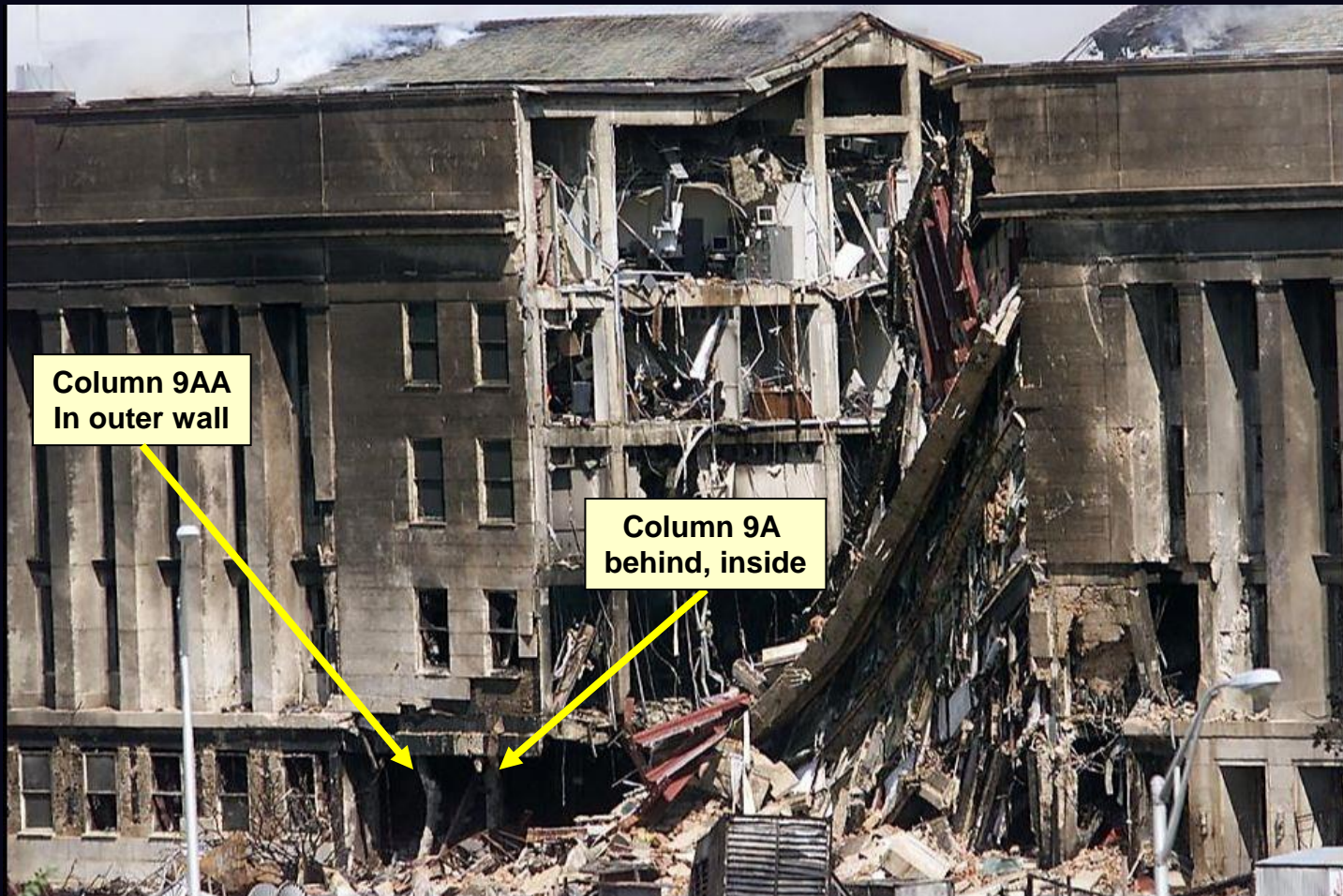
Analysis of Column 14AA  
on Second Floor



# Observations

- Column 14AA<sub>2</sub> is:
  - Hanging from 3<sup>rd</sup> floor slab
  - Hanging inward in direction of impacting plane
- Second floor slab is missing in this area
- Damage is consistent with a large plane impact damaging second floor slab and bashing in column 14AA<sub>2</sub>

# Post Collapse Photo Showing Columns 9A and 9AA



**Column 9AA  
In outer wall**

**Column 9A  
behind, inside**

Member, [ScientistsFor911Truth.org](http://ScientistsFor911Truth.org)

Analysis of Column 14AA  
on Second Floor

# Post Collapse Photo Showing Columns 9A and 9AA

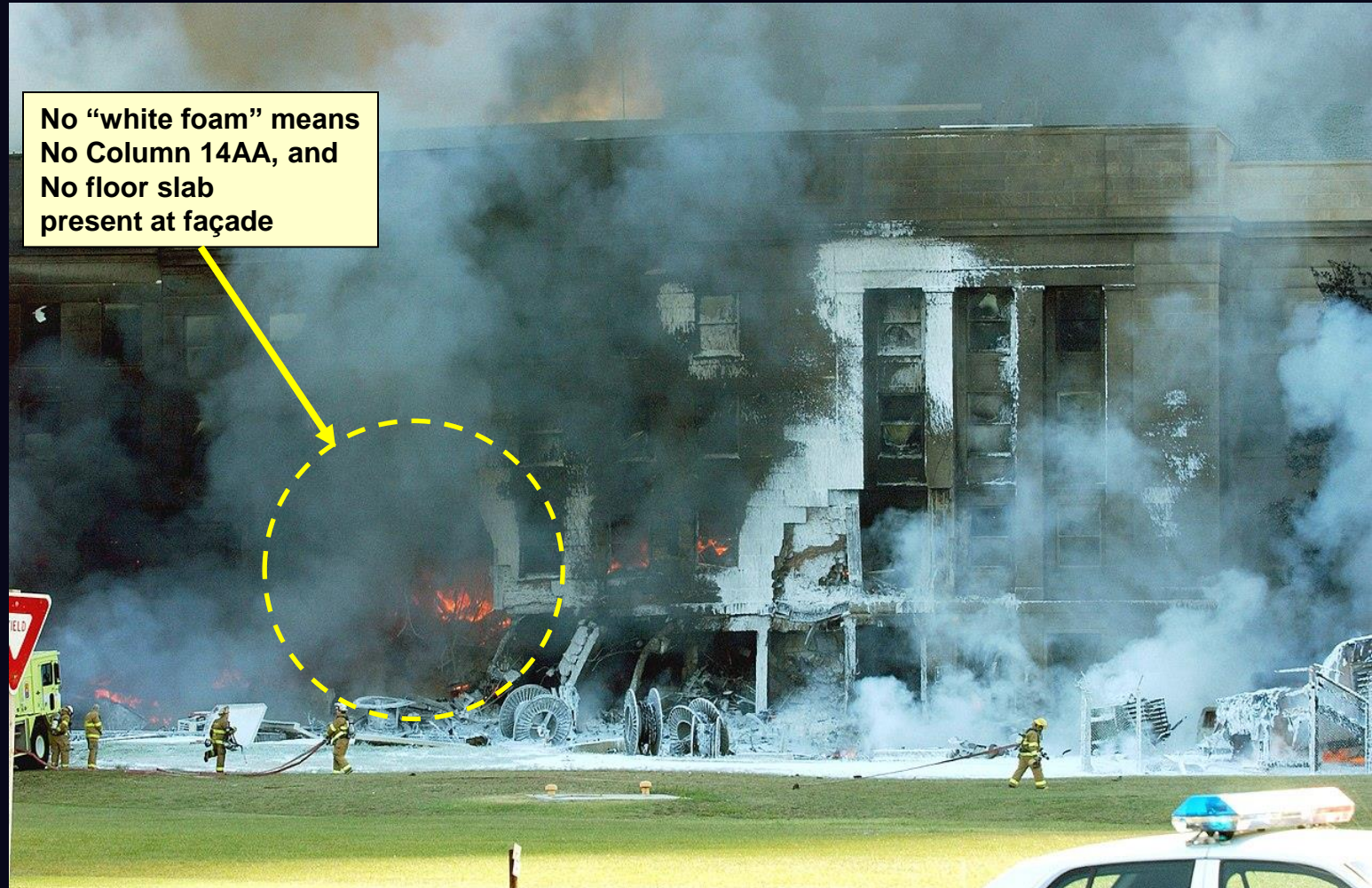


Member, [ScientistsFor911Truth.org](http://ScientistsFor911Truth.org)

Analysis of Column 14AA  
on Second Floor



# Foam Covered Façade Shows No Foam on Colum14AA or Floor Slab



Member, [ScientistsFor911Truth.org](http://ScientistsFor911Truth.org)

Analysis of Column 14AA  
on Second Floor



# Original Will Morris Photo



Member, [ScientistsFor911Truth.org](http://ScientistsFor911Truth.org)

Analysis of Column 14AA  
on Second Floor